



# Friday Focus

## Carter County Schools

Volume 5, Issue 6 September 23, 2016

### Making Assessment Meaningful

*Assessment is about my impact.*

Meaningful assessments can come in many shapes and sizes. In fact, to be thoroughly engaging and to draw the best work out of the students, assessments should come in different formats.

Thankfully, with the Common Core standards exemplifying the 4Cs – Creativity, Critical Thinking, Collaboration, and Communication teachers are free to create formative assessments that are very engaging and allow our students to demonstrate their learning in a wide variety of ways.

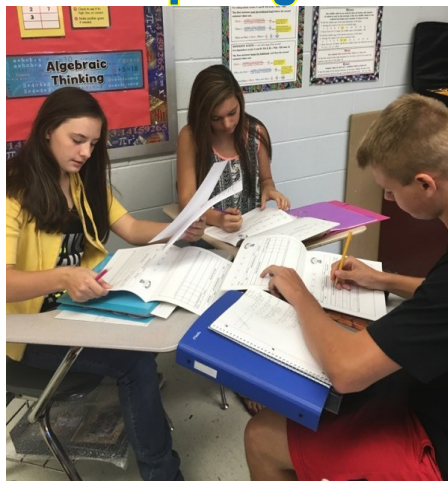
**Creativity** Are they students creating or just regurgitating? Are they being given credit for presenting something other than what was described?

**Collaboration** Have they spent some time working with others to formulate their thoughts, to brainstorm, or to seek feedback from peers?

**Critical Thinking** Are the students doing more work than the teacher in seeking out information and problem solving?

**Communication** Does the assessment emphasize the need to communicate the content well? Is writing involved, as well as other modalities? If asked to teach the content to other students, what methods will the student use to communicate the information and help embed it more deeply?

### Spotlight on Excellence



Students in Mrs. Linda Burton's class were engaged in writing activities in their Student Action Plans. Students discussed the importance of goal setting and why it was relevant to them. Great Job, Mrs. Burton!! Dr. John Hattie's work reminds us that when students take ownership of their own learning they will experience tremendous growth. We can expect to see one year's growth with strategies that have an effect size of .40. Our new Action Plan initiative is based on research that has an effect size of 1.44. We should see some amazing outcomes if we implement with fidelity.

### Fall Happenings

- Sept. 26 LMS Academy @ 2:30
- Sept. 28 District PLCS/CSH Meeting
- Sept. 28 EILA
- Sept. 29 Elementary MAF Grants Due
- Sept. 30 District Data Analysis Day



### Inside this issue:

[40 Creative Assessment Ideas](#)

[10 Creative Pre-Assessment Ideas](#)

[Meaningful Assessments Infographic](#)

[Assessment Ideas from Scholastic](#)

